



mattamyHOMES



CLOCKWORK

PHASE 2 AT UPPER JOSHUA CREEK

WHERE LIFE SYNC'S | CONDO SUITES



IT'S YOUR TIME.

A MATTAMY MILESTONE

Since 1978, we've been building homes and designing communities where people love to live.

Today, we're celebrating the privilege of welcoming more than 100,000 families to our communities, proudly becoming North America's largest privately owned homebuilder along the way.

It seems only fitting that we follow up such an extraordinary occasion with another memorable moment: the continued growth of our ClockWork community at Upper Joshua Creek.

ClockWork 2 is the next phase of this new concept neighbourhood in the historic area of Oakville, and is designed to inspire a vivid lifestyle of meaningful connections, rich experiences and an abundance of culture.

Everything is in its right place at ClockWork.



LIVE LARGER

Welcome to ClockWork 2, the second phase of the enviable ClockWork at Upper Joshua Creek community.

It all begins from its prime location in Oakville at the edge of Mississauga, where you're close to everything both cities have to offer, but still an escape from the busyness so you can enjoy green space and scenic lake views.

From here, a 15 to 20-minute car ride gets you to more places than a 45-minute streetcar trip. And you'll love how easy it is to hop on public transportation or hit the highways into Toronto.

Life at ClockWork means never having to miss a beat of what's happening in the GTA.



IN A PLACE WHERE LIFE FITS TOGETHER.

THE FACE OF CLOCKWORK

A condo community designed with precision.

Looking up at ClockWork's well-crafted exterior, the extent of the community's thoughtful design becomes apparent.

As a sundial reports time by the position of the sun in the sky, the shape and form of ClockWork's buildings are deliberately arranged to maximize the amount of light that shines into its interiors, while limiting the shadows that cast across the landscape below.

There is a rhythm to the terracotta masonry and glazed gold accents that trim the timeless concrete façade, giving the building a polished gleam.

On the ground, the landscaping mirrors the synchronous beauty of the architecture, with plantings, benches and a distinctive gathering pavilion following the design beats of the building to impressive effect.

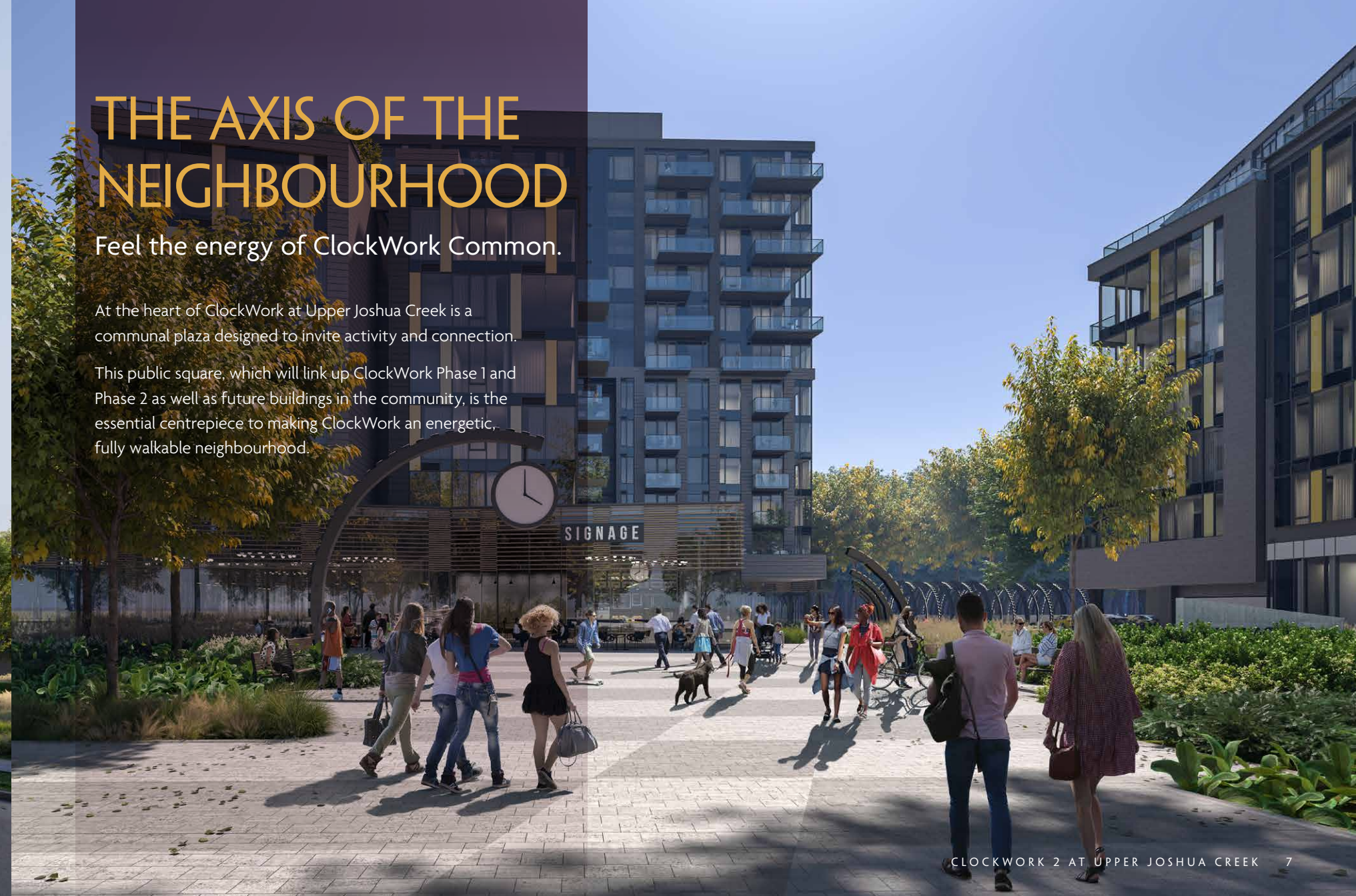


THE AXIS OF THE NEIGHBOURHOOD

Feel the energy of ClockWork Common.

At the heart of ClockWork at Upper Joshua Creek is a communal plaza designed to invite activity and connection.

This public square, which will link up ClockWork Phase 1 and Phase 2 as well as future buildings in the community, is the essential centrepiece to making ClockWork an energetic, fully walkable neighbourhood.





MAKE AN ENTRANCE

Inside and outside, ClockWork keeps you moving. Entrances to the lobby are conveniently located on both the north and south ends of the building, with a breezeway that connects you to the east and west sides of the building.

Step into the lobby and feel welcomed by well-appointed fixtures and finishes that communicate elegance and prestige. Like a luxury timepiece, the curved contours and delicate details evoke an atmosphere of warmth, refinement and sophistication.

Like every other detail of ClockWork at Upper Joshua Creek, there is an efficiency of design that wastes no space. The rhythm of life, optimized.

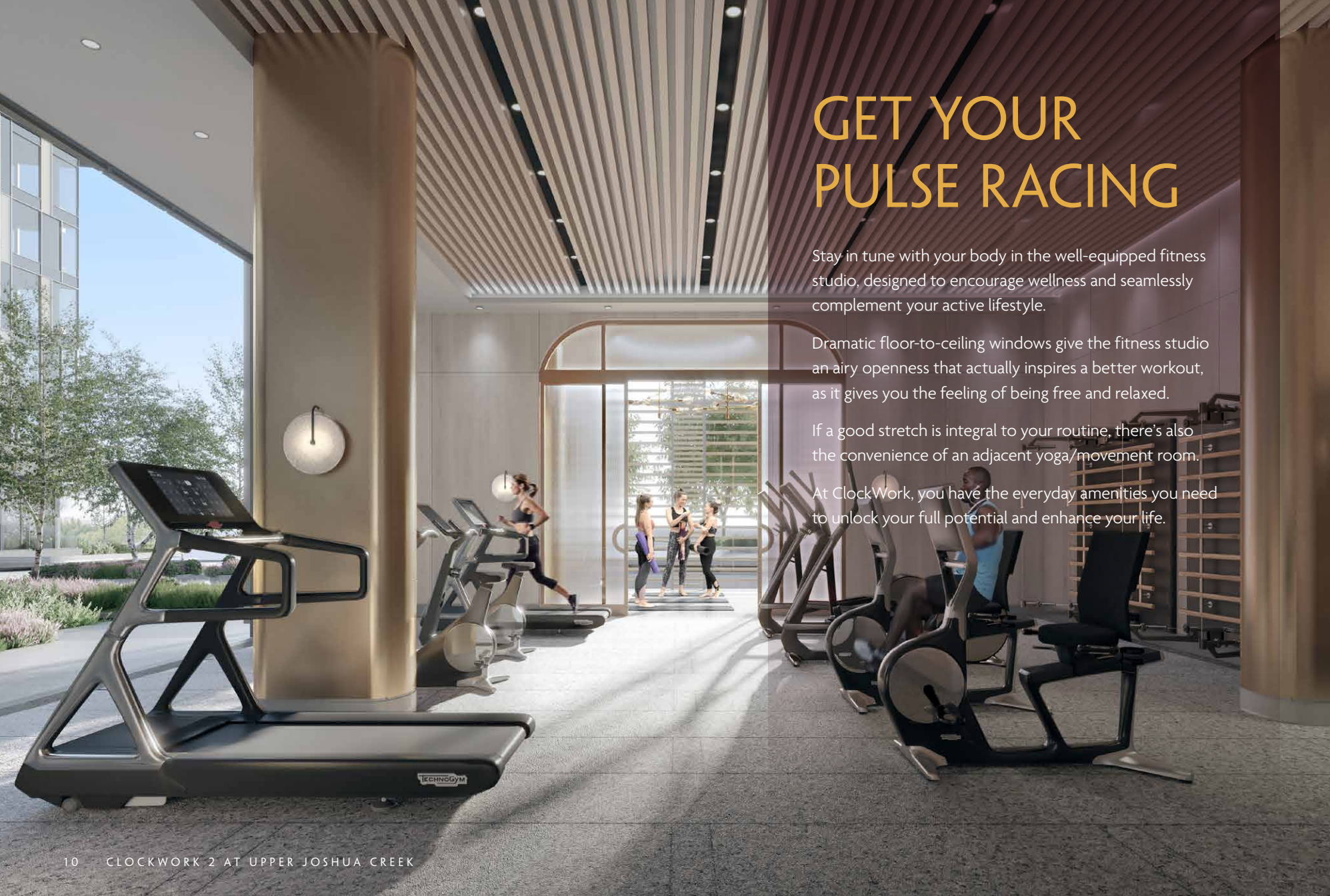


BALANCE IS THE KEY TO CLOCKWORK

One of the most important elements to ClockWork is the spaces and amenities that help you maintain a healthy balance.

Start by taking a trip up to the show-stopping rooftop terrace, with breathtaking views of the lake and the Niagara Escarpment that reaffirm the heightened lifestyle of all who live here.

Fire up one of the BBQs to craft up a great meal on the grill, then tuck into one of many seating areas, sectioned out for intimate gathering spaces and surrounded by lush rooftop gardens, trees and greenery.



GET YOUR PULSE RACING

Stay in tune with your body in the well-equipped fitness studio, designed to encourage wellness and seamlessly complement your active lifestyle.

Dramatic floor-to-ceiling windows give the fitness studio an airy openness that actually inspires a better workout, as it gives you the feeling of being free and relaxed.

If a good stretch is integral to your routine, there's also the convenience of an adjacent yoga/movement room.

At ClockWork, you have the everyday amenities you need to unlock your full potential and enhance your life.

GATHER HERE



GROUND FLOOR AMENITIES



SEVENTH FLOOR AMENITIES





WHERE HOME IS A SPACE TO DWELL.



1 BEDROOM SUITES

To walk into a 1 Bedroom suite at ClockWork is to arrive at the intersection of function and flair.

In-suite laundry, large windows for natural light, a balcony off the living room, and a kitchen island with breakfast bar are just a few of the features that define these ultramodern, sleekly designed units.



2 BEDROOM SUITES

Move up to a 2 Bedroom suite at ClockWork and get acquainted with the epitome of spacious luxury.

The combined living/dining area exploits the open-concept layout, giving you one large, expansive space that's perfect for entertaining. Step out to your private balcony to relax and unwind. Then retreat to the comforts of your sizeable primary bedroom for some rest and relaxation.

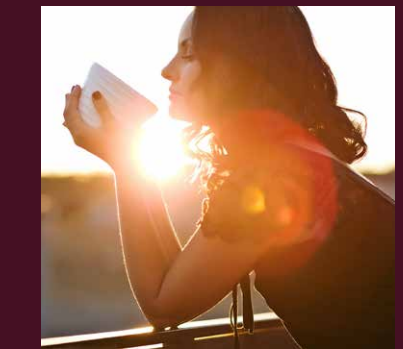
A MEASURE OF DESIGN ELEGANCE

It's time to make it yours.

Our state-of-the-art Design Studio experience includes your own dedicated Design Consultant to help guide you through our nearly endless range of contemporary features and timeless finishes.

Airy 9' ceilings throughout serve as the elegant bones of your suite, with stone composite flooring, granite kitchen countertops, and stainless steel appliances adding a sleek, classic look to the open-concept living and dining space.

Right from your front door, a ClockWork home is a statement.





LIVE IN THE NOW

A dynamic lifestyle where the future meets the present.

Get ready to experience the convenience of leading-edge smart technology seamlessly integrated into your suite.

From biometric keyless entry to remote access & security, automated vehicle entry for seamless access to underground parking, smart thermostat control, real-time parcel notifications, and video calling to see who's arrived before letting them in, you can feel safe and secure knowing you're connected to your home around the clock.



ELEVATE YOUR LIFESTYLE. LOWER YOUR CARBON FOOTPRINT.

Every suite is heated and cooled with renewable geothermal energy.

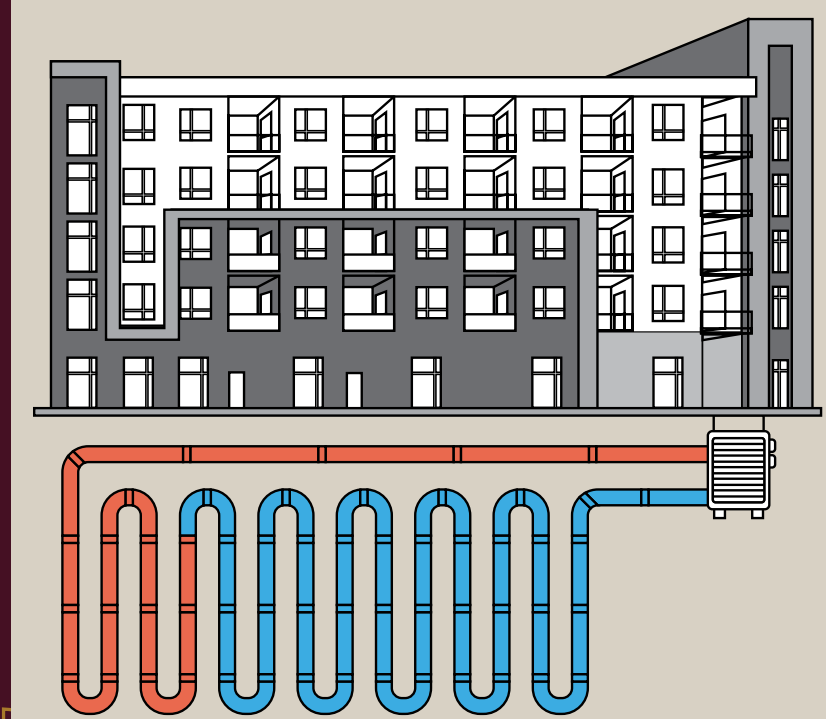
The ingenuity behind the design of ClockWork includes the additional benefit of reducing your carbon footprint by approximately 87% courtesy of the community's geothermal technology, which heats and cools your unit.

In fact, it's four times as efficient in heating and twice as efficient in cooling compared to traditional units*.

Here's how it works: the normal heating equipment in your home connects to an underground geothermal system for the whole building. Natural heat stored in the ground is collected and supplied to your suite, providing steadier temperature moderation and humidity control.

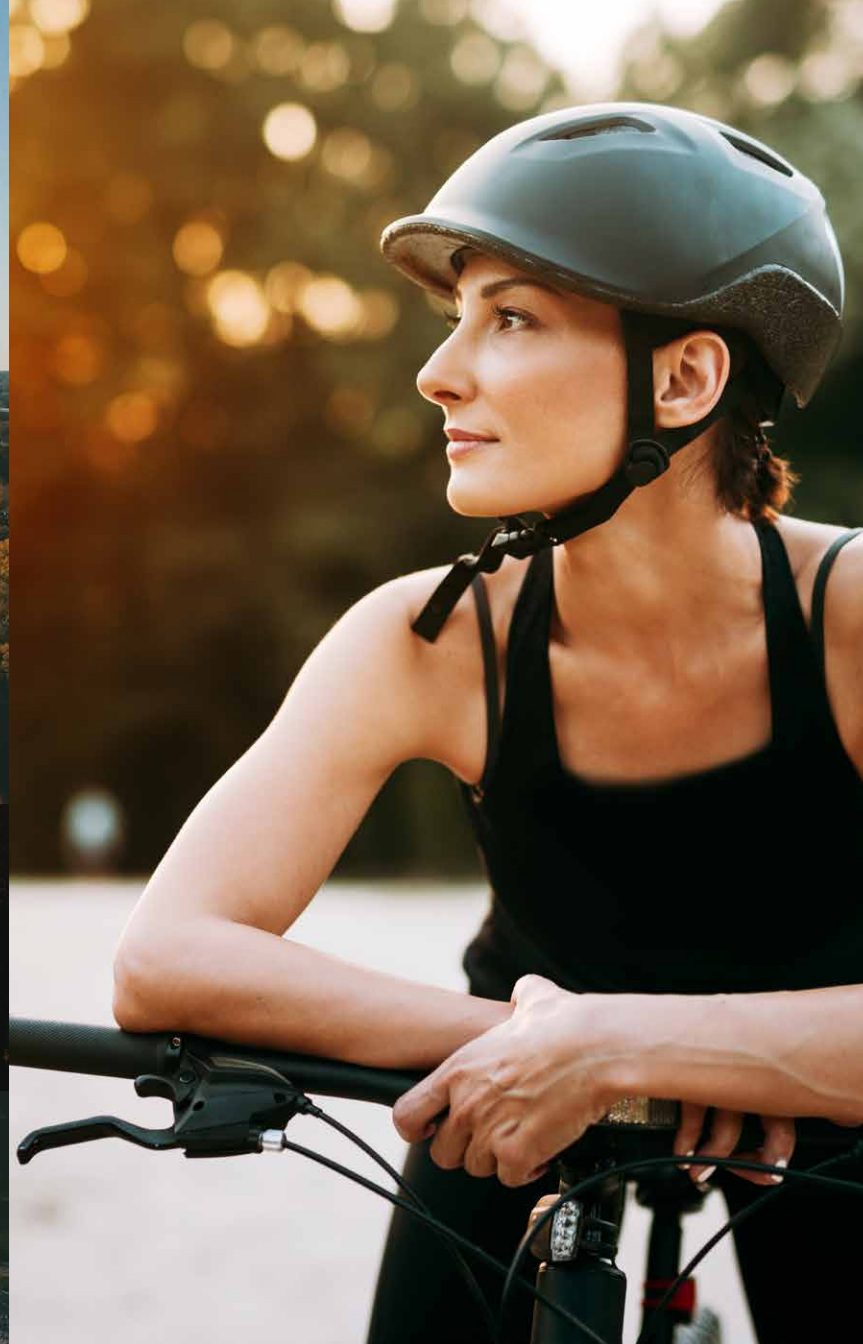
As it requires no direct use of fossil fuels to run, what it also means for you is stable and predictable monthly heating and cooling costs, not to mention a sustainable lifestyle that fits effortlessly into your day-to-day.

*The above projections are the result of modelling exercises by a third-party engineering consultant comparing geothermally heated and cooled suites with those using a typical natural gas boiler and chiller system. There can be no assurance that such projections will prove accurate and actual results could differ materially from such projections.





WHERE EVERY DAY, A NEW DISCOVERY AWAITS.



THE TIMELESS APPEAL OF UPPER JOSHUA CREEK

Upper Joshua Creek is a sprawling ravine community that epitomizes Oakville's upscale reputation, making it the perfect foundation for ClockWork.

Located along Dundas Street East, Upper Joshua Creek is a relatively new area, but well-established enough to feature mature trees, highly respected schools, and a wealth of urban amenities.

The proximity of the area to downtown Oakville and the cities of Mississauga and Toronto makes it very popular among homebuyers looking to find their dream home in a neighbourhood designed to deliver an exciting, versatile lifestyle.

THE PROMISE OF OAKVILLE

Oakville is among the top places in Halton to live according to a 2020 study by MoneySense Magazine*, a financial publication devoted to helping Canadians make informed choices related to their finances and investments.

Oakville is known as a great place to raise a family, the best place to retire, and the best place for new Canadians.

There's a reason why an address in Oakville comes with a certain prestige and why we've been building here since 1980.

This extraordinary area puts everything you need to live a fulfilling, well-rounded life right on your doorstep, making it the perfect foundation for ClockWork.

*Canada's Best Places to Live" – July 31, 2018. MoneySense Magazine (moneysense.ca)



OUR LOVE AFFAIR WITH OAKVILLE

Over 40 years of building forever homes.

From its historic landscapes and abundant parkland, to its great schools, vibrant shopping district and urban amenities, it's no wonder Oakville has been one of our favourite places to build for more than 40 years.

Today, many of the first Oakville settlers' estates still stand on their original land, showcasing the long history of this stunning town. We strive to build on this legacy, by forwarding our tradition of creating sought-after communities like ClockWork at Upper Joshua Creek in the Golden Horseshoe.



AROUND THE CLOCK

Amenities are close at hand from your home in ClockWork at Upper Joshua Creek. Here are just a few highlights in the immediate area. Keep in mind, Mississauga and Toronto are also just a short drive away.

SHOPPING

- 1) Oakville Place**
240 Leighland Ave, Oakville, ON L6H 3H6
- 2) Canadian Tire**
400 Dundas St E, Oakville, ON L6H 6Z9
- 3) Longo's**
338 Dundas St E, Oakville, ON L6H 6Z9
- 4) Wine Rack**
338 Dundas St E, Oakville, ON L6H 6Z9
- 5) LCBO**
251 Oak Walk Dr, Oakville, ON L6H 6M3
- 6) Winners/HomeSense**
2431 Trafalgar Rd, Oakville, ON L6H 6K7
- 7) Walmart**
234 Hays Blvd, Oakville, ON L6H 6M4
- 8) Real Canadian Superstore**
201 Oak Park Blvd, Oakville, ON L6H 6M3
- 9) Costco**
3180 Laird Rd, Mississauga, ON L5L 6A5
- 10) Shoppers Drug Mart**
2525 Prince Michael Dr, Oakville, ON L6H 0E9
- 11) The Beer Store**
290 Hays Blvd, Oakville, ON L6H 7P3
- 12) Home Depot**
2555 Bristol Cir, Oakville, ON L6H 5W9
- 13) Chapters – Vega**
3050 Vega Blvd, Mississauga, ON L5L 5X8

RECREATION

- 14) 5 Drive-In Theatres**
2332 Ninth Line, Oakville, ON L6H 7G9
- 15) Ninth Line Sports Park**
3115 Ninth Line, Mississauga, ON
- 16) The Keg Steakhouse**
300 Hays Blvd, Oakville, ON L6H 7P3
- 17) State and Main Kitchen and Bar**
301 Hays Blvd, Oakville, ON L6H 6Z3
- 18) Starbucks Coffee**
2509 Prince Michael Dr, Oakville, ON L6H 0E9
- 19) GoodLife Fitness**
2395 Trafalgar Rd, Oakville, ON L6H 6K7
- 20) Tim Hortons**
2355 Trafalgar Rd, Oakville, ON L6J 4N3
- 21) Spoon and Fork Thai**
2345 Trafalgar Rd, Oakville, ON L6H 7K7
- 22) Inye Yoga**
2640 Bristol Cir #300, Oakville, ON L6H 6Z7
- 23) LA Fitness**
3055 Vega Blvd, Mississauga, ON L5L 5Y3
- 24) Cineplex**
2081 Winston Park Dr, Oakville, ON L6H 6P5
- 25) Oakville Soccer Club**
1520 Pine Glen Rd, Oakville, ON L6M 4P4
- 26) Toronto Rock Lacrosse**
1132 Invicta Dr 2nd Floor, Oakville, ON L6H 6G1
- 27) Joshua's Creek Arena**
1663 North Service Rd E, Oakville, ON L6H 7T1

28) Sixteen Mile Sports Complex

3070 Neyagawa Blvd, Oakville, ON L6M 4L6

29) Oakville Entertainment Centrum

2075 Winston Park Dr, Oakville, ON L6H 6P5

30) Dave and Busters

2021 Winston Park Dr Unit E, Oakville, ON L6H 6P5

SCHOOLS

- 31) Sheridan College**
(Trafalgar Road Campus)
1430 Trafalgar Road, Oakville, ON L6H 2L8
- 32) Trafalgar Ridge Montessori School**
2379 Trafalgar Rd, Oakville, ON L6H 6K7
- 33) River Oaks Public School**
2173 Munn's Ave, Oakville, ON L6H 3S9
- 34) White Oaks Secondary School**
1330 Montclair Dr, Oakville, ON L6H 1Z5
- 35) St. Thomas Aquinas Catholic Secondary School**
124 Dorval Dr, Oakville, ON L6K 2W1
- 36) St. Mary's Catholic Elementary School**
2175 Colonel William Pkwy, Oakville, ON L6M 0B7
- 37) King's Christian Collegiate**
528 Burnhamthorpe Rd W, Oakville, ON L6M 4K6
- 38) Holy Trinity Catholic Secondary School**
2420 Sixth Line, Oakville, ON L6H 5Z8
- 39) Iroquois Ridge High School**
1123 Glenashton Dr, Oakville, ON L6H 5M1

ADDITIONAL LOCAL AMENITIES (short walk or drive from home):

- 40) Sunset Grill**
266 Hays Blvd, Oakville, ON L6H 7P3
- 41) Pita Pit**
266 Hays Blvd, Oakville, ON L6H 7P3
- 42) Booster Juice**
330 Dundas St E Unit #2, Oakville, ON L6H 6Z9
- 43) Boston Pizza**
2011 Winston Park Dr, Oakville, ON L6H 6P5
- 44) Hero Burgers**
380 Dundas St E, Oakville, ON L6H 6Z9
- 45) Subway**
2085 Winston Park Dr Building R, Oakville, ON L6H 6P5

BANKS

- RBC**
2460 Winston Churchill Blvd, Oakville, ON L6H 6J5
- CIBC**
271 Hays Blvd, Oakville, ON L6H 6Z3
- TD Canada Trust**
2517 Prince Michael Dr, Oakville, ON L6H 0E9
- BMO**
320 Dundas St E, Oakville, ON L6H 6Z9

PARKS/TRAILS

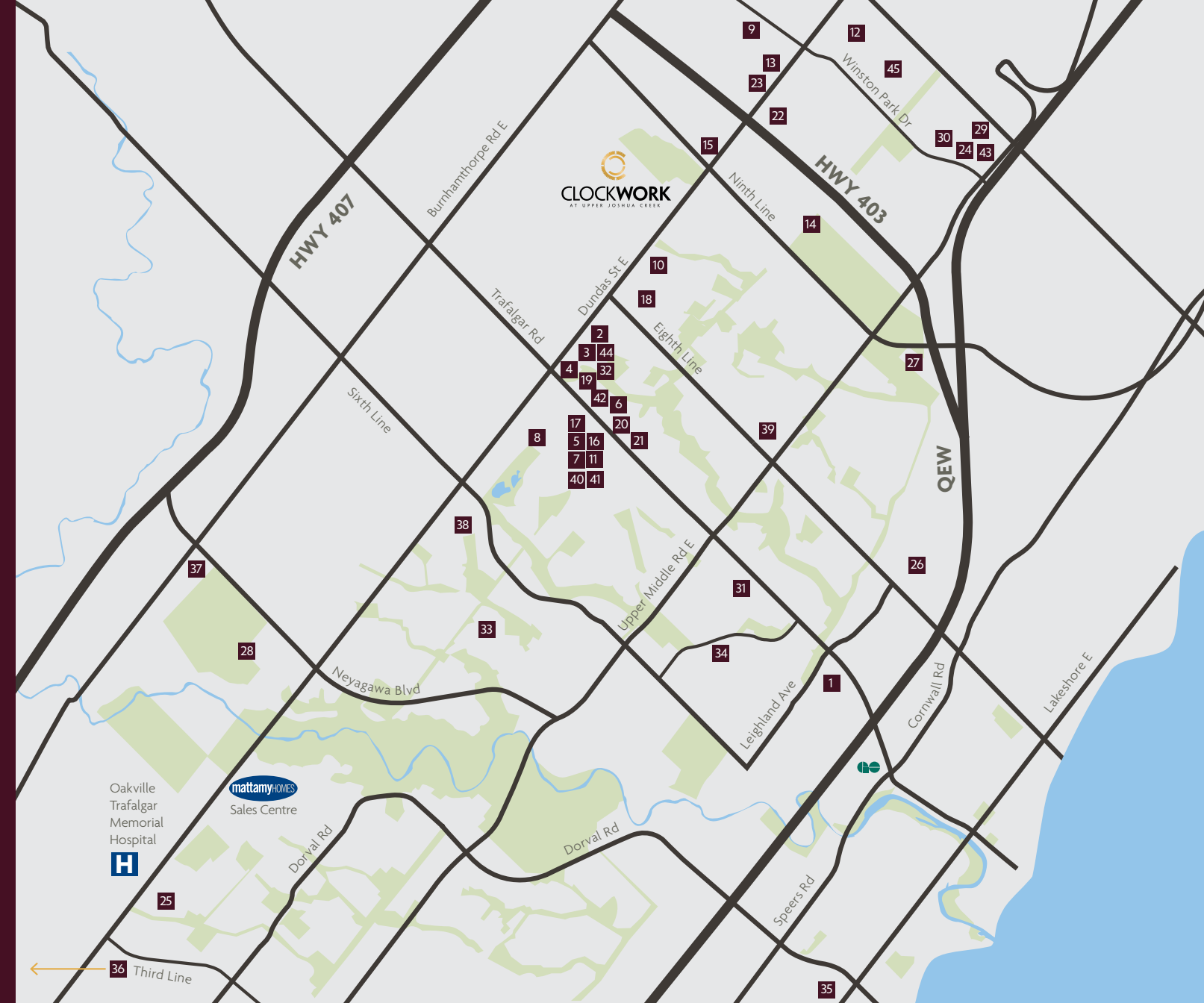
- Joshua Creek Trail**, Oakville, ON
- Craigeith Park**, Oakville, ON
- Glenashton Park**
1051 Glenashton Dr, Oakville, ON L6H 6Z4

CITY SERVICES

- Service Ontario**
220 North Service Rd W Suite P5030, Oakville, ON L6M 2Y3
- Oakville Trafalgar Memorial Hospital**
3001 Hospital Gate, Oakville, ON L6M 0L8
- North Oakville Medical Centre**
3075 Hospital Gate, Oakville, ON L6M 1M1

HIGHWAYS

- 4-min drive to 403
- 6-min drive to 407 (Toll Highway)
- 8-min drive to QEW
- 15-min drive to Oakville GO station
- 15-min drive to 401
- 35-min drive to downtown Toronto





CLOCKWORK
PHASE 2 AT UPPER JOSHUA CREEK

mattamyhomes.com

Illustration's are artist's impression. Information subject to change without notice. E. & O.E.

